



Fisheries and Oceans  
Canada

Pêches et Océans  
Canada

Canadian  
Coast Guard

Garde côtière  
canadienne

# Notices to Mariners

**Edition No. 06/2025**  
**June 27, 2025**



Safety First, Service Always

## Monthly Western Edition

Canada 

Notices to Mariners – Monthly Western Edition  
Edition No. 06/2025

Aussi disponible en français :  
Avis aux navigateurs – Édition mensuelle de l'Ouest  
Édition n° 06/2025

**Published under the Authority of:**

Canadian Coast Guard Programs  
Aids to Navigation and Waterways  
Fisheries and Oceans Canada  
Montreal, QC H2Y 2E7

For more information, contact [DFO.Notmar-Notmar.MPO@dfo-mpo.gc.ca](mailto:DFO.Notmar-Notmar.MPO@dfo-mpo.gc.ca).

© His Majesty the King in Right of Canada,  
as represented by the Minister of Fisheries, Oceans  
and the Canadian Coast Guard, 2025.

Cat. No. Fs152-9E-PDF (Electronic PDF, English)  
ISSN 2817-0253

Cat. No. Fs152-9F-PDF (Electronic PDF, French)  
ISSN 2817-0261

A web version is available here:

[Notices to Mariners – Monthly Editions](#) (English)

[Avis aux navigateurs – Publications mensuelles](#) (French)

## Explanatory Notes – Notices to Mariners (NOTMAR)

**Geographical positions** refer directly to the graduations of the largest scale Canadian Hydrographic Service chart (unless otherwise indicated).

**Bearings** refer to the true compass and are measured clockwise from 000° (North) clockwise to 359°; those relating to lights are from seaward.

**Visibility** of lights is that in clear weather.

**Depths** - The units used for soundings (metres, fathoms or feet) are stated in the title of each chart.

**Elevations** are normally given above Higher High Water, Large Tide (unless otherwise indicated).

**Distances** may be calculated as follows:

- 1 nautical mile = 1,852 metres (6,076.1 feet)
- 1 statute mile = 1,609.3 metres (5,280 feet)
- 1 metre = 3.28 feet

### Temporary and Preliminary Notices to Mariners – Section 1A of *Notices to Mariners*

These notices are indicated by a (T) or a (P), respectively. Please note that nautical charts are not amended by the Canadian Hydrographic Service for temporary (T) and preliminary (P) notices. It is recommended that mariners chart these corrections in pencil. For the list of charts affected by (T) & (P) notices, please refer to the current [Notices to Mariners - Monthly Summary of Temporary and Preliminary Notices](#) publication.

### Suggestions and Corrections Form

This form is specifically for suggestions and corrections to Notices to Mariners publications. It is available [online](#) and also in [fillable PDF format](#) included with the monthly publication ZIP file.

To submit comments and suggestions on possible improvements to the various publications and services: [DFO.Notmar-Notmar.MPO@dfo-mpo.gc.ca](mailto:DFO.Notmar-Notmar.MPO@dfo-mpo.gc.ca).

To report chart discrepancies and/or corrections to the *Canadian Sailing Directions* booklets: Fill out the [Marine Information Reporting Form](#) and/or email [chsinfo@dfo-mpo.gc.ca](mailto:chsinfo@dfo-mpo.gc.ca).

To report emergencies or navigational hazards: [Contact your nearest MCTS centre](#)

- VHF channel 16 (156.8 MHz)
- MF/HF frequency 2182 kHz/4125 kHz (where available)
- \*16 on a cellphone (where available)

### NOTMAR Website – Monthly Editions, Chart Corrections and Chart Patches

The NOTMAR website allows users to access the [monthly publications](#), [chart corrections](#), and [chart patches](#).

Users can subscribe for free to the [email notification service](#) to receive notifications when charts of interest are updated, including their patches, as well as when a new Monthly Edition of *Notices to Mariners* is published.

In addition, the monthly publication and related files to download, such as chart patches, can be obtained all together through the download of a single ZIP file.

## Explanatory Notes – Canadian Hydrographic Service (CHS)

### Chart Corrections – Section 2 of *Notices to Mariners*

Corrections to nautical charts will be listed in numerical order by chart number. Each chart correction listed applies only to that particular chart. Related charts, if any, will have their own specific correction listed separately.

Users should also refer to CHS *Chart 1: Symbols, Abbreviations and Terms* for additional information pertaining to the correction of charts.

The illustration below describes the elements that will comprise a typical Section 2 chart correction:

	Chart Number	Chart Title	Chart latest new edition date	Horizontal Chart Datum	Last Correction
Weekly Chart Correction Date	1312	Lac Saint-Pierre - New Edition - 10-MAY-2019 - NAD 1983			
	05-AUG-2022				LN/D. 24-SEP-2021
	Amend			46°03'32.4"N 073°03'21.6"W	
		(See Chart 1 P16)		(Q2022035) LL(2177) DFO(6410690-01)	
	Chart Action	Chart 1 Reference No.	CCG Reference No.	List of Lights No.	CHS Reference No.

The last correction number is identified with the **LN/D** or **Last Notice to Mariners Number / Date**.

Mariners are advised that only the most critical changes that directly affect safety to navigation are issued in "Section 2 – Chart Corrections." This limitation is required to ensure that charts remain as clear and easy to read as possible. As a result, mariners may see minor discrepancies of a non-critical nature between information in official publications. For example, a small change in the nominal range or focal height of a light may not result in the production of a chart correction in *Notices to Mariners*, but may result in a correction in the [List of Lights, Buoys and Fog Signals](#) publication.

Note: In the case of a discrepancy between information provided on CHS charts relating to aids to navigation, and the *List of Lights, Buoys and Fog Signals* publication, the latter shall be deemed as containing the most up-to-date information.

## Explanatory Notes – Marine Communications and Traffic Services (MCTS)

### Navigational Warnings / Notices to Shipping

The Canadian Coast Guard (CCG) is implementing a number of changes to the aids to navigation system in Canada.

These changes are advertised as Navigational Warnings, formerly called Notices to Shipping<sup>1</sup>, that are broadcast by the CCG, and are then followed up with Notices to Mariners, then charts are updated by hand correction, reprints or new editions.

Mariners are advised that all relevant Navigational Warnings (NAVWARN) should be kept until superseded by Notices to Mariners or through revised charts issued by the Canadian Hydrographic Service (CHS).

NAVWARN are accessible on the applicable regional page on the [CCG Navigational Warnings](#).

CHS is reviewing the impact of these changes with CCG and together are preparing an action plan on the issuing of chart revisions.

For further information, contact your regional NAVWARN Issuing Desk.

<b>Western Region</b> <b>Prince Rupert MCTS Centre</b> “P” Series NAVWARN Canadian Coast Guard Bag 4444 Prince Rupert, BC V8J 4K2 Telephone: 250-627-3070 Email: <a href="mailto:NAVWARN.MCTSPrinceRupert@innav.gc.ca">NAVWARN.MCTSPrinceRupert@innav.gc.ca</a>	<b>Arctic Region</b> <b>*Iqaluit MCTS Centre</b> <i>Operational from approximately mid-May until late December.</i> “A” Series NAVWARN Canadian Coast Guard P.O. Box 189 Iqaluit, NU X0A 0H0 Telephone: 867-979-5269 Facsimile: 867-979-4264 Email: <a href="mailto:NAVWARN.MCTSIqaluit@innav.gc.ca">NAVWARN.MCTSIqaluit@innav.gc.ca</a>
--	---

\*Service available in English and in French.

---

<sup>1</sup> The expression “Notice to Shipping” was changed to “Navigational Warning” in January 2019.

## Table of Contents

<b>Section 1: General and Safety Information</b>	<b>1</b>
*505/23 Canadian Hydrographic Service – Magnetic Declination Calculations .....	1
*1207/23 Canadian Hydrographic Service – Inappropriate Geographical Names Review Process .....	1
*208/24 West Coast Haida Gwaii – Voluntary Protection Zone for Shipping .....	1
*1105/24 Transport Canada – British Columbia North Coast Waterway Management Guidelines .....	2
*506/25 Anguniaqvia Niqiyuam Marine Protected Areas (ANMPA), Tarium Niryutait Marine Protected Areas (TNMPA) and Beluga and Bowhead Whale Protection: Voluntary Avoidance and Slowdown Areas .....	4
*519(P)/25 Scott Islands – Paper Chart to be Discontinued .....	7
*602/25 Canadian Hydrographic Service – Nautical Charts .....	7
*603/25 Canadian Hydrographic Service – Electronic Navigational Charts .....	7
*604/25 Canadian Hydrographic Service – Raster Digital Charts (BSB V3) .....	8
*605/25 Transport Canada - Ship Safety Bulletins #08 and #09/2025 .....	8
<b>Section 1A: Temporary and Preliminary Notices</b>	<b>9</b>
Reminder – Comment Period for Active Preliminary Notices .....	9
<b>Section 2: Chart Corrections</b>	<b>10</b>
<b>Section 3: Radio Aids to Marine Navigation Corrections</b>	<b>21</b>
*612/25 Radio Aids to Marine Navigation 2025 (Atlantic, St. Lawrence, Great Lakes, Lake Winnipeg, Arctic and Pacific) .....	21
<b>Section 4: Canadian Sailing Directions Corrections</b>	<b>22</b>
<b>Section 5: List of Lights, Buoys and Fog Signals Corrections</b>	<b>23</b>

## Numerical Index of Canadian Charts Affected

This numerical index lists all nautical charts mentioned in this monthly edition of Notices to Mariners. Only charts appearing in Section 2 of this publication require a chart correction. The appearance of charts in all other sections, particularly those related to the correction of other nautical publications, is included here for reference.

Chart No.	Pages	Chart No.	Pages	Chart No.	Pages
3001	<a href="#">7</a>				
3011	<a href="#">7</a>				
3440	<a href="#">10</a>				
3441	<a href="#">10</a>				
3463	<a href="#">10</a>				
3490	<a href="#">9</a> , <a href="#">10</a>				
3496	<a href="#">23</a>				
3546	<a href="#">10</a> , <a href="#">11</a>				
3548	<a href="#">11</a> , <a href="#">12</a>				
3625	<a href="#">7</a> , <a href="#">9</a>				
3670	<a href="#">12</a>				
3910	<a href="#">12</a> , <a href="#">23</a>				
3931	<a href="#">13</a>				
3934	<a href="#">13</a> , <a href="#">14</a>				
3943	<a href="#">14</a> , <a href="#">15</a>				
3958	<a href="#">15</a>				
3980	<a href="#">15</a> , <a href="#">16</a> , <a href="#">17</a>				
3981	<a href="#">17</a> , <a href="#">18</a>				
7010	<a href="#">18</a>				
7193	<a href="#">18</a>				
7194	<a href="#">18</a> , <a href="#">19</a> , <a href="#">20</a>				

## Section 1: General and Safety Information

---

### **\*505/23 Canadian Hydrographic Service – Magnetic Declination Calculations**

(Recurrent publication of notice \*505/23, originally published in the *Notices to Mariners – Monthly Western Edition 05/2023* publication.)

Mariners are advised that CHS has adopted the harmonized World Magnetic Model (WMM), as found on the NCEI/NOAA website. Old compass rose declination information on CHS navigational products can be updated using the [Magnetic Declination Estimated Value](#) website. While the differences in the model declinations are small each year, they can become more significant over a large period of time.

### **\*1207/23 Canadian Hydrographic Service – Inappropriate Geographical Names Review Process**

(Recurrent publication of notice \*1207/23, originally published in the *Notices to Mariners – Monthly Western Edition 12/2023* publication.)

The records of the Canadian Hydrographic Service could contain geographical names that may be considered inappropriate, offensive and derogatory. Geographical naming authorities are in the process of addressing many offensive place names, the review process is underway. For more information, about inappropriate geographical names, please see the [following announcement](#).

### **\*208/24 West Coast Haida Gwaii – Voluntary Protection Zone for Shipping**

(Recurrent publication of notice \*208/24, originally published in the *Notices to Mariners – Monthly Western Edition 02/2024* publication.)

Reference: Notice \*1105/21 is cancelled.

#### **Voluntary Protection Zone for Shipping, western shore of Haida Gwaii (formerly Queen Charlotte Islands)**

Haida Gwaii's remote location, rugged coastline, variable sea and weather conditions, and rich ecological and cultural heritage make it vulnerable to the potential for pollution from shipping breakdowns and accidents. Increasing the distance vessels travel offshore can increase the amount of time available to address propulsion, steering or other issues, and the likelihood of a towing vessel being able to respond to a vessel in distress or drifting. This in turn reduces the risk of grounding and oil spills.

A Voluntary Protection Zone for Shipping on the western shore of Haida Gwaii is currently in effect. In the Voluntary Protection Zone, commercial vessels of 500 gross tonnage or greater are requested to observe a minimum distance of 50 nautical miles from the western shore of Haida Gwaii with the following exemptions:

#### **Exemptions from requested 50 nm distance:**

- Cruise vessels, which are asked to observe a minimum 12 nm distance from shore;
- Vessels transiting from Alaska to British Columbia or Washington State, or vice versa, through the Voluntary Protection Zone are asked to observe a distance of at least 25 nm from shore
- No minimum distance is requested for tugs and barges (including pushing and towing alongside) or vessels engaged in commercial fishing.
- Vessels to which this bulletin applies are not required to observe requested minimum distances if doing so may compromise navigational, vessel, passenger or cargo safety.



The Voluntary Protection Zone for Shipping coordinates are:

54° 15.436' N	133° 04.788' W
54° 17.572' N	134° 02.484' W
54° 13.614' N	134° 19.427' W
54° 11.786' N	134° 30.841' W
53° 44.036' N	134° 32.677' W
53° 11.118' N	134° 16.412' W
52° 18.483' N	133° 20.917' W
51° 24.590' N	132° 04.081' W
51° 56.158' N	131° 01.830' W

Vessels are requested to adhere to these distances on a voluntary basis and only when it does not jeopardize the safety of navigation, the vessel, the persons onboard, and the cargo.



#### **\*1105/24 Transport Canada – British Columbia North Coast Waterway Management Guidelines**

(Recurrent publication of notice \*1105/24, originally published in the *Notices to Mariners – Monthly Western Edition* 11/2024 publication.)

Reference: Notice \*1004/23 is cancelled.

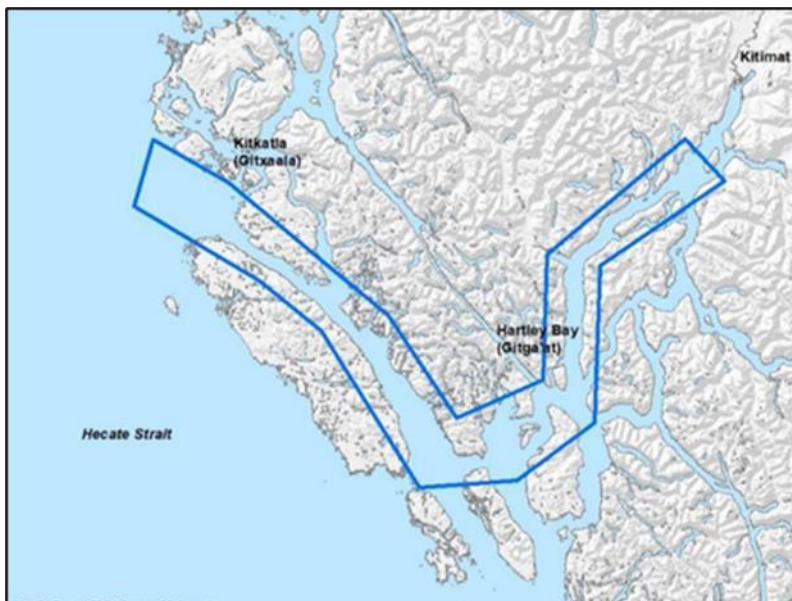
The North Coast Waterway Management Guidelines are voluntary guidelines that aim to improve safety on the water by reducing conflicts between First Nations' marine use activities, such as fishing and shoreline harvesting, and commercial vessels on the shipping route between Kitimat and Browning Entrance. The guidelines came into effect on September 1, 2022, and will be reviewed from time to time.

The guidelines apply to all vessels navigating on the route between Kitimat and Browning Entrance, on the north coast of British Columbia. This area includes:

- Douglas Channel
- Wright Sound
- Lewis Passage
- Otter Channel
- Nepean Sound, and
- Principe Channel

**The complete guidelines document is available at [British Columbia North Coast Waterway Management Guidelines](#).**

Nothing in these guidelines replaces or changes how we apply any Canadian or international laws or regulations, including the Collision Regulations. Furthermore, nothing in these guidelines prevents or limits the master or pilot of a ship from making any decisions to protect the vessel, the crew, or the marine environment.

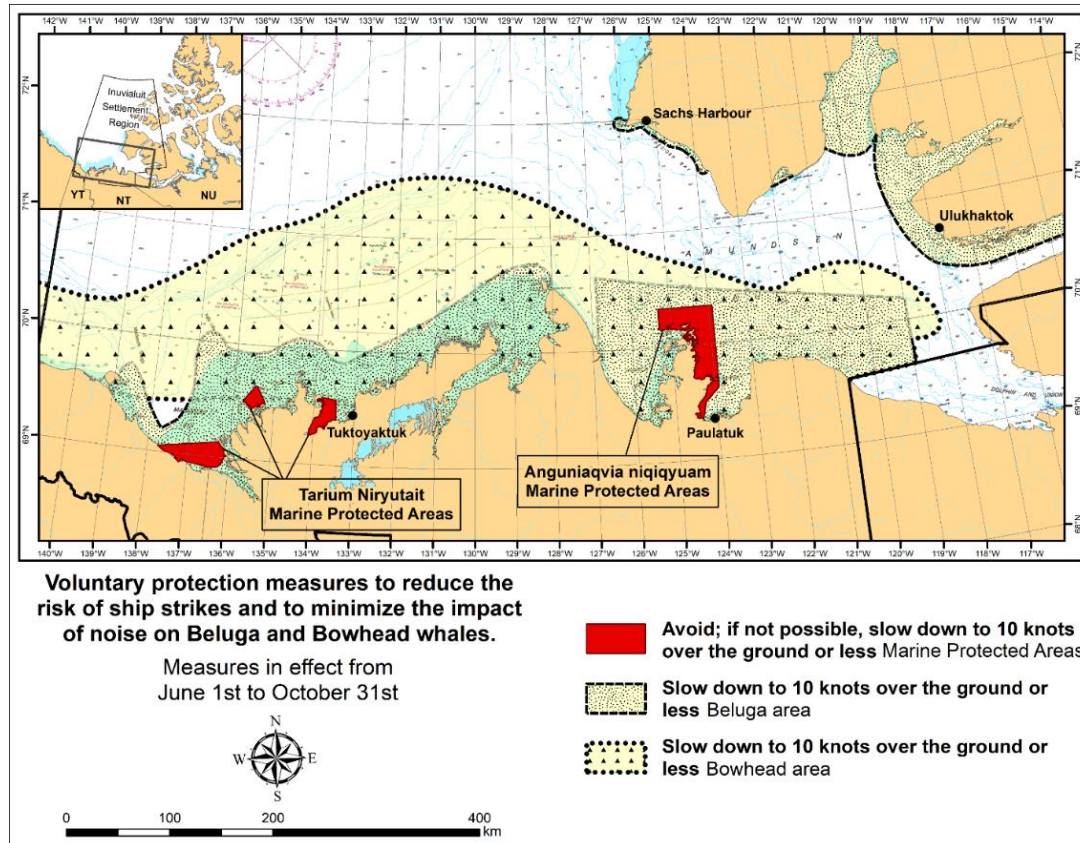


The guidelines include information for:

- all vessels that covers:
  - inshore safety zones
  - routing measures
  - speed reductions
  - guidelines for meeting and passing
    - a special operating area in Wright Sound, and
    - guidelines in case of a mechanical or electrical breakdown
- large commercial ships, including bulk carriers, general cargo vessels, liquid bulk vessels, and passenger vessels
- tugs and barges, and
- vessels operating in First Nations Areas of Concern where you must pay special attention to make sure local community users can transit and use the area safely.

**\*506/25 Anguniaqvia Niqquyuam Marine Protected Areas (ANMPA), Tarium Niryutait Marine Protected Areas (TNMPA) and Beluga and Bowhead Whale Protection: Voluntary Avoidance and Slowdown Areas**

(Recurrent publication of notice \*506/25, originally published in the *Notices to Mariners – Monthly Western Edition 05/2025* publication.)



The two established Marine Protected Areas (MPAs) in Canada's Western Arctic are located within the Inuvialuit Settlement Region, as such all activities must comply with the [Inuvialuit Final Agreement](#). Protection and preservation of Arctic wildlife, the environment and biological productivity is one of the principles of the Inuvialuit Final Agreement and it is this principle that led the Inuvialuit Regional Corporation and the Inuvialuit Game Council to initiate establishment of the Western Arctic MPAs. The waters in and near the MPAs, and the offshore marine habitats of the Beaufort Sea and Amundsen Gulf, are important summer foraging habitats and travel routes used seasonally (May-October) by the Eastern Beaufort Sea beluga stock, and the Bering-Chukchi-Beaufort bowhead population.

## REGULATORY PROTECTION MEASURES

All whale species are protected under the Marine Mammal Regulations, pursuant to the *Fisheries Act* requiring immediate reporting of accidental contact between a vehicle or fishing gear and a marine mammal to the Minister. Within the boundaries of the MPAs, a general prohibition is set out in the Regulations, pursuant to the *Oceans Act* prohibiting activities that disturb, damage, destroy or remove any living marine organism from the areas. Any accident, including those with a marine mammal within the TNMPA must be reported within two hours after its occurrence, to the Canadian Coast Guard. For marine accidents such as collisions that occur within the ANMPA or outside the MPAs or for any situation involving a marine mammal that is dead or in trouble, report to the Fisheries and Oceans Canada, Inuvik office at (867) 777-7500.

For more information on the ANMPA and TNMPA, including local contacts and species-specific minimum distances, see Section A2 - Notices 5 and 5A.3 of the *Notices to Mariners Annual Edition*.

## VOLUNTARY PROTECTION MEASURES

Voluntary measures are in effect from June 1<sup>st</sup> to October 31<sup>st</sup>. See map above.

These measures apply to merchant vessels, cruise ships, small vessels and adventure craft within the boundaries of the MPAs and the additional identified areas to prevent collisions with whales and to mitigate the underwater noise generated by the vessels. These measures should only be taken when they will not jeopardize navigational safety.

**Avoid (red area):** To reduce the risk of underwater noise disturbance and collisions with whales within the MPAs, vessels should avoid transiting through the MPAs if possible. If passage through this area is necessary, vessels should slow down to a speed not exceeding 10 knots over the ground and post additional lookouts such as a marine mammal observer in order to increase the chances of seeing the whales and thus taking necessary measures to avoid them. If bypassing the whales is not possible, slow down and wait for the animals to move away to a distance greater than 400 metres (0.215 nautical miles) before resuming original speed not exceeding 10 knots over the ground. It is more difficult to see the animals in rain, fog, or in rough sea states, therefore increased caution is recommended.

**Slow down to 10 knots over the ground or less (yellow stippled areas):** To reduce the risk of underwater noise disturbance and collisions with whales within these areas, it is recommended that vessels should slow down to a speed not exceeding 10 knots over the ground, navigate within the marked community supply channels and post additional lookouts.

These voluntary measures are secondary to rights under the [Inuvialuit Final Agreement](#).

### MPA Coordinates

The Tarium Niryutait Marine Protected Areas consist of three areas of the Mackenzie Bay: Okeevik, Kittigaryuit and Niaqunnaq. The three areas are bounded by straight lines and lines following the low water line which connect the following geographical coordinates [Universal Transverse Mercator (UTM) North America Datum 1983 (NAD 83)]

Okeevik Sub Area		
Point	Latitude (North)	Longitude (West)
1	69° 38' 19"	135° 25' 09"
2	69° 38' 03"	135° 25' 11"
3	69° 37' 46"	135° 24' 52"
4	69° 29' 49"	135° 12' 49"
5	69° 30' 45"	135° 16' 56"
6	69° 29' 26"	135° 18' 53"
7	69° 29' 23"	135° 19' 06"
8	69° 28' 07"	135° 20' 25"
9	69° 27' 36"	135° 24' 25"
10	69° 25' 51"	135° 32' 27"
11	69° 26' 32"	135° 34' 54"
12	69° 28' 21"	135° 35' 24"
13	69° 28' 35"	135° 36' 40"
14	69° 28' 39"	135° 37' 58"
15	69° 30' 34"	135° 45' 54"
16	69° 35' 18"	135° 35' 42"
17	69° 36' 00"	135° 22' 10"
18	69° 34' 40"	135° 20' 09"
19	69° 34' 00"	135° 20' 09"
20	69° 34' 00"	135° 27' 39"
21	69° 36' 00"	135° 27' 39"
22	69° 27' 00"	135° 31' 11"
23	69° 27' 00"	135° 34' 45"

Kittigaryuit Sub Area		
Point	Latitude (North)	Longitude (West)
1	69° 35' 10"	133° 48' 26"
2	69° 34' 00"	133° 28' 00"
3	69° 23' 37"	133° 26' 40"
4	69° 20' 34"	133° 40' 37"
5	69° 19' 05"	133° 42' 21"
6	69° 19' 01"	133° 42' 31"
7	69° 20' 39"	133° 43' 20"
8	69° 16' 42"	133° 54' 54"
9	69° 15' 20"	134° 06' 53"
10	69° 16' 33"	134° 05' 56"
11	69° 20' 42"	134° 02' 44"
12	69° 24' 00"	133° 59' 10"
13	69° 24' 34"	133° 53' 49"
14	69° 28' 21"	133° 48' 15"
15	69° 28' 02"	133° 50' 59"
16	69° 33' 20"	133° 47' 29"
17	69° 34' 33"	133° 47' 42"
18	69° 32' 55"	133° 51' 09"
19	69° 32' 56"	133° 51' 54"
20	69° 33' 46"	133° 55' 48"
21	69° 33' 46"	133° 55' 31"

Niaqunnaq Sub Area		
Point	Latitude (North)	Longitude (West)
1	69° 08' 00"	136° 16' 44"
2	69° 04' 25"	136° 07' 45"
3	69° 03' 43"	136° 07' 08"
4	69° 01' 19"	136° 04' 45"
5	69° 01' 14"	136° 04' 45"
6	69° 00' 57"	136° 05' 42"
7	69° 00' 12"	136° 07' 08"
8	68° 57' 00"	136° 10' 00"
9	68° 55' 00"	136° 15' 00"
10	68° 54' 22"	136° 31' 50"
11	68° 55' 00"	136° 38' 33"
12	68° 56' 15"	137° 00' 41"
13	68° 56' 29"	137° 03' 03"
14	68° 55' 48"	137° 11' 00"
15	68° 57' 50"	137° 16' 40"
16	68° 59' 20"	137° 21' 30"
17	69° 03' 09"	137° 44' 54"

The Anguniagvia niquyuam Marine Protected Areas consist of two areas in Darnley Bay and Amundsen Gulf in the Beaufort Sea: Zone 1 and Zone 2. The areas consist of the seabed, the subsoil to a depth of five metres and the water column, including the sea ice. The two areas are bounded by straight lines and lines following the low water line which connect the following geographical coordinates [Universal Transverse Mercator (UTM) North America Datum 1983 (NAD 83)].

Zone 1		
Point	Latitude (North)	Longitude (West)
A	69° 21' 07.8"	124° 21' 32.0" approx
B	70° 12' 00.0" approx	124° 31' 55.2"
C	70° 08' 22.0"	124° 41' 45.0" approx
D	70° 09' 09.9"	124° 57' 42.0" approx
E	70° 09' 13.0" approx	125° 05' 28.6"
F	70° 09' 13.2"	125° 17' 53.0"
G	70° 20' 00.0"	125° 17' 53.0"
H	70° 20' 00.0"	123° 54' 17.5"
I	69° 37' 20.6"	123° 54' 17.5"
J	69° 30' 00.0"	124° 15' 34.7"

Zone 2		
Point	Latitude (North)	Longitude (West)
K	70° 04' 15.8"	124° 41' 51.0" approx
L	70° 04' 48.6"	124° 41' 54.0" approx
M	70° 02' 12.9"	124° 35' 23.0" approx
N	70° 02' 12.9"	124° 35' 29.0" approx



### \*519(P)/25 Scott Islands – Paper Chart to be Discontinued

(Recurrent publication of notice \*506/25, originally published in the *Notices to Mariners – Monthly Western Edition 05/2025* publication.)

Reference chart: 3625

The Canadian Hydrographic Service proposes to permanently discontinue paper chart 3625 called Scott Islands.

Mariners and other interested parties are invited to comment on this action until August 31, 2025.

Comments should be directed to the [Canadian Hydrographic Service email address](#).

Any objections raised must state the facts on which they are based and should include supporting information on safety, commerce and public benefit.

### \*602/25 Canadian Hydrographic Service – Nautical Charts

Charts	Main Title	Scale	Edition Date	Published	Cat#	Price
<b>New Charts</b>						
3011	Juan de Fuca to / à Queen Charlotte Sound	1:700 000	2025-04-25	2025-06-06	2	\$20.00
<b>Charts Permanently Withdrawn</b>						
3001	Vancouver Island / Île de Vancouver, Juan de Fuca Strait to/à Queen Charlotte Sound	Cancelled by 3011				

### \*603/25 Canadian Hydrographic Service – Electronic Navigational Charts

S-57 ENC Number	Chart Title	ENC Compilation Scale	Published
<b>New Charts</b>			
CA47VNQA (Edn 1.000)	CA47VP1A_5800N069W	1:22 500	2025-06-06
CA47VP1A (Edn 1.000)	CA47VP1A_5800N068W	1:22 500	2025-06-06
CA47VPBA (Edn 1.000)	CA47VPBA_5800N067W	1:22 500	2025-06-06
CA47VPMA (Edn 1.000)	CA47VPMA_5800N066W	1:22 500	2025-06-06
CA486NEA (Edn 1.000)	CA486NEA	1:22 500	2025-06-20
CA486NQA (Edn 1.000)	CA486NQA_5900n06900w	1:45 000	2025-06-06
CA486P1A (Edn 1.000)	CA486P1A	1:45 000	2025-06-06
CA486PBA (Edn 1.000)	CA486PBA_5900N06700W	1:45 000	2025-06-06
CA486PMA (Edn 1.000)	CA486PMA_5900N06600W	1:45 000	2025-06-06
CA48GNEA (Edn 1.000)	CA48GNEA	1:22 500	2025-06-20
CA571254 (Edn 1.000)	CA571254	1:6 000	2025-06-06
CA5CVJLA (Edn 1.000)	CA5CVJLA	1:11 000	2025-06-13
CA5CVJMA (Edn 1.000)	CA5CVJMA	1:11 000	2025-06-13
CA5CVJNA (Edn 1.000)	CA5CVJNA	1:11 000	2025-06-13
CA5CVJPA (Edn 1.000)	CA5CVJPA	1:11 000	2025-06-13
CA5CVJQA (Edn 1.000)	CA5CVJQA	1:11 000	2025-06-13

S-57 ENC Number	Chart Title	ENC Compilation Scale	Published
<b>New Editions</b>			
CA448MHA (Edn 3.000)	Transit4600N07300W	1:11 000	2025-06-06
CA448PMA (Edn 3.000)	CA448PMA	1:22 500	2025-06-20
CA44JPMA (Edn 2.000)	CA44JPMA	1:90 000	2025-06-20
CA543R1A (Edn 2.000)	CA543R1A	1:11 000	2025-06-06
CA54DMRA (Edn 2.000)	Port4650N07220W	1:2 000	2025-06-20
CA54UPSA (Edn 2.000)	Port4800N06550W	1:2 000	2025-06-06
CA571541 (Edn 2.000)	CA571541	1:11 000	2025-06-20
<b>Charts Permanently Withdrawn</b>			
CA373500	Approches à/Approaches to Rivière George	Cancelled by CA473446	
CA373501	Beacon Island à/to Qikirtaaluk Islands	Cancelled by CA473446	
CA373502	Qikirtaaluk Islands à/to Point Qirniraujaq	Cancelled by CA473499,CA473499	
CA373503	Approches à/Approaches to Rivière Koksoak	Cancelled by CA473499,CA473499	
CA570239	Ganges Harbour and/et Long Harbour		
CA570319	Namu Harbour	Cancelled by CA571254	
CA570567	Approaches to/Approches à Sidney		

**\*604/25 Canadian Hydrographic Service – Raster Digital Charts (BSB V3)**

Charts	Main Title	Scale	Edition Date	Published
<b>Charts Permanently Withdrawn</b>				
RM-3001	Vancouver Island / Île de Vancouver, Juan de Fuca Strait to/à Queen Charlotte Sound			

**\*605/25 Transport Canada - Ship Safety Bulletins #08 and #09/2025**

New **Ship Safety Bulletins** have recently been posted on the [Transport Canada website](https://www.tc.gc.ca/transport-canada-website).

To view or download these bulletins, please click on the links below:

**[SSB#08/2025](#) – Pilot project on dry dock inspections by external survey resources for small certified domestic vessels**  
**RDIMS# 20834286**

**[SSB#09/2025](#) – Protecting killer whales in the waters of southern British Columbia, 2025**  
**RDIMS# 20875055**

Sign up for [e-Bulletin](#) to receive an e-mail notice each time a new Ship Safety Bulletin is published on our website.

**Contact us at** [marinesafety-securitemaritime@tc.gc.ca](mailto:marinesafety-securitemaritime@tc.gc.ca) or 1-855-859-3123 (Toll Free).

## Section 1A: Temporary and Preliminary Notices

### Reminder – Comment Period for Active Preliminary Notices

This is a reminder that the comment period is still open for the following active Preliminary notices:

Notice #	Reference Chart #	Aids Affected (LL #)	Intent of Notice
<b>Pacific Coast</b>			
<a href="#">518(P)/25</a>	3490	366.1	Aid to Navigation to be Discontinued
<b>Other Preliminary Notices</b>			
<a href="#">519(P)/25</a>	3625	N/A	Paper Chart to be Discontinued

Please refer to the [Notices to Mariners - Monthly Summary of Temporary and Preliminary Notices](#) publication for details.

### Inland Waters

#### Temporary Notices

No notices applicable for this edition.

#### Preliminary Notices

No notices applicable for this edition.

### Pacific Coast

#### Temporary Notices

No notices applicable for this edition.

#### Preliminary Notices

No notices applicable for this edition.



## Section 2: Chart Corrections

### 3440 - Race Rocks to/à D'Arcy Island - New Edition - 01-JUL-2005 - NAD 1983

06-JUN-2025

LNMD. 25-APR-2025

Add rock which covers and uncovers with drying height of 4.6 metres  
(See Chart 1, K11)

48°33'59.4"N 123°16'19.9"W

*DFO(6205216-01)*

### 3441 - Haro Strait, Boundary Pass and/et Satellite Channel - New Edition - 01-JUL-2005 - NAD 1983

06-JUN-2025

LNMD. 16-MAY-2025

Add rock which covers and uncovers with drying height of 4.6 metres  
(See Chart 1, K11)

48°33'59.4"N 123°16'19.9"W

*DFO(6205216-01)*

### 3463 - Strait of Georgia, Southern Portion/Partie Sud - New Edition - 01-JUL-2005 - NAD 1983

20-JUN-2025

LNMD. 18-APR-2025

Delete radio tower  
(See Chart 1, E28)

49°08'20.6"N 123°12'13.8"W

*DFO(6205218-01)*

Delete radio tower  
(See Chart 1, E28)

49°08'18.2"N 123°12'04.2"W

*DFO(6205218-02)*

Delete pier  
(See Chart 1, F14)

joining 49°08'20.6"N 123°12'13.8"W  
49°08'18.2"N 123°12'04.2"W  
and 49°08'19.4"N 123°11'56.2"W

*DFO(6205218-03)*

### 3490 - Fraser River/Fleuve Fraser, Sand Heads to/à Douglas Island, Compartment A-B - New Edition - 02-NOV-2012 - World Geodetic System 1984

20-JUN-2025

LNMD. 16-MAY-2025

Delete radio tower marked RLts, Ro(61)  
(See Chart 1, E28)

49°08'18.9"N 123°12'11.9"W

*DFO(6205218-01)*

Delete radio tower marked Ro  
(See Chart 1, E28)

49°08'16.6"N 123°12'02.2"W

*DFO(6205218-02)*

Delete pier  
(See Chart 1, F14)

joining 49°08'18.9"N 123°12'11.9"W  
49°08'16.6"N 123°12'02.2"W  
and 49°08'17.6"N 123°11'54.4"W

*DFO(6205218-03)*

### 3546 - Broughton Strait - New Edition - 15-APR-2005 - NAD 1983

06-JUN-2025

LNMD. 16-MAY-2025

Delete submarine cable  
(See Chart 1, L30.1)

joining 50°37'47.5"N 127°09'28.6"W  
50°37'05.9"N 127°10'10.2"W  
and 50°36'53.1"N 127°10'15.9"W

*DFO(6205211-01)*

Add	submarine cable (See Chart 1, L30.1)	joining 50°35'13.3"N 127°00'35.3"W 50°35'18.5"N 127°00'40.1"W 50°35'22.3"N 127°01'07.6"W 50°35'43.8"N 127°02'00.9"W 50°35'52.0"N 127°02'08.7"W 50°36'08.6"N 127°02'10.1"W 50°36'35.0"N 127°02'40.4"W 50°36'48.6"N 127°03'15.0"W 50°36'49.6"N 127°03'30.4"W 50°36'39.4"N 127°04'49.7"W 50°36'47.2"N 127°05'55.3"W 50°36'57.2"N 127°07'46.7"W 50°36'54.3"N 127°08'19.2"W 50°36'59.0"N 127°09'32.4"W and 50°36'54.2"N 127°10'16.4"W <i>DFO(6205211-02)</i>
Add	pontoon (See Chart 1, F16)	joining 50°35'35.1"N 127°05'22.5"W 50°35'32.9"N 127°05'22.5"W and 50°35'31.6"N 127°05'21.1"W <i>DFO(6205215-01)</i>
Delete	wreck, least depth unknown, dangerous to surface navigation marked PA (See Chart 1, K28)	50°37'42.7"N 127°08'26.4"W <i>DFO(6205219-01)</i>
Add	wreck WK with known depth of 12.1 metres (See Chart 1, K26)	50°37'43.6"N 127°08'23.9"W <i>DFO(6205219-02)</i>

**3546 - Port McNeill - New Edition - 15-APR-2005 - NAD 1983**  
06-JUN-2025

LNM/D. 16-MAY-2025

Add	submarine cable (See Chart 1, L30.1)	joining 50°36'41.1"N 127°04'30.0"W 50°36'41.4"N 127°04'35.2"W 50°36'39.5"N 127°04'50.8"W 50°36'41.0"N 127°05'00.8"W 50°36'40.8"N 127°05'07.6"W and 50°36'42.0"N 127°05'12.5"W <i>DFO(6205211-02)</i>
Add	pontoon (See Chart 1, F16)	joining 50°35'35.1"N 127°05'22.5"W 50°35'32.9"N 127°05'22.5"W and 50°35'31.6"N 127°05'21.1"W <i>DFO(6205215-01)</i>

**3548 - Queen Charlotte Strait, Central Portion/Partie Centrale - New Edition - 26-SEP-1997 - NAD 1983**  
06-JUN-2025

LNM/D. 28-MAR-2025

Delete	submarine cable (See Chart 1, L30.1)	joining 50°37'47.5"N 127°09'28.6"W 50°37'05.9"N 127°10'10.2"W and 50°36'53.1"N 127°10'15.9"W <i>DFO(6205211-01)</i>
--------	---	--

Add	submarine cable (See Chart 1, L30.1)	joining 50°36'42.0"N 127°04'30.0"W 50°36'39.4"N 127°04'49.7"W 50°36'47.2"N 127°05'55.3"W 50°36'57.2"N 127°07'46.7"W 50°36'54.3"N 127°08'19.2"W 50°36'59.0"N 127°09'32.4"W and 50°36'54.2"N 127°10'16.4"W <i>DFO(6205211-02)</i>
Add	pontoon (See Chart 1, F16)	joining 50°35'35.1"N 127°05'22.5"W 50°35'32.9"N 127°05'22.5"W and 50°35'30.7"N 127°05'21.2"W <i>DFO(6205215-01)</i>
Delete	wreck, least depth unknown, dangerous to surface navigation marked PA (See Chart 1, K28)	50°37'42.7"N 127°08'26.4"W <i>DFO(6205219-01)</i>
Add	wreck WK with known depth of 12.1 metres (See Chart 1, K26)	50°37'43.6"N 127°08'23.9"W <i>DFO(6205219-02)</i>
<b>3670 - Broken Group - New Edition - 21-OCT-1994 - NAD 1983</b> 20-JUN-2025		LNMD. 11-APR-2025
Add	rock which covers and uncovers with drying height of 2.1 metres (See Chart 1, K11)	48°57'13.5"N 125°21'44.0"W <i>DFO(6205214-01)</i>
Add	rock which covers and uncovers with drying height of 1.3 metres (See Chart 1, K11)	48°57'15.9"N 125°21'44.0"W <i>DFO(6205214-02)</i>
Add	rock which covers and uncovers with drying height of 1.5 metres (See Chart 1, K11)	48°57'25.8"N 125°17'12.6"W <i>DFO(6205214-03)</i>
<b>3910 - Higgins Passage - New Edition - 11-SEP-2020 - World Geodetic System 1984</b> 20-JUN-2025		LNMD. 21-FEB-2025
Delete	depth of 0.2 metres (See Chart 1, I10)	52°29'43.4"N 128°48'15.6"W <i>DFO(6205234-01)</i>
Add	rock which covers and uncovers with drying height of 0.9 metres (See Chart 1, K11)	52°29'44.2"N 128°48'16.3"W <i>DFO(6205234-02)</i>
Delete	depth of 17.2 metres (See Chart 1, I10)	52°29'47.3"N 128°48'13.3"W <i>DFO(6205234-03)</i>
Add	depth of 2.6 metres (See Chart 1, I10)	52°29'47.2"N 128°48'14.7"W <i>DFO(6205234-04)</i>

**3931 - Smith Inlet, Boswell Inlet and/et Draney Inlet - New Chart - 21-FEB-1992 - NAD 1983**

06-JUN-2025

LNMD. 09-FEB-2024

Delete	wharf (See Chart 1, F13)	joining 51°24'22.5"N 127°38'42.1"W 51°24'23.1"N 127°38'44.7"W 51°24'21.8"N 127°38'46.0"W and 51°24'21.0"N 127°38'43.3"W <i>DFO(6205220-01)</i>
Delete	pontoon (See Chart 1, F16)	between 51°24'23.0"N 127°38'44.6"W and 51°24'24.6"N 127°38'43.9"W <i>DFO(6205220-02)</i>
Delete	pontoon (See Chart 1, F16)	between 51°24'21.5"N 127°38'45.7"W and 51°24'15.8"N 127°38'51.3"W <i>DFO(6205220-03)</i>
Add	pontoon (See Chart 1, F16)	between 51°24'18.7"N 127°38'44.7"W and 51°24'19.5"N 127°38'48.0"W <i>DFO(6205220-04)</i>
Add	pontoon (See Chart 1, F16)	joining 51°24'23.1"N 127°38'44.7"W 51°24'23.4"N 127°38'46.0"W 51°24'19.5"N 127°38'48.0"W and 51°24'16.0"N 127°38'50.3"W <i>DFO(6205220-05)</i>
Add	floating breakwater Bkw (See Chart 1, F4.1)	joining 51°24'12.2"N 127°38'54.0"W 51°24'15.3"N 127°38'54.7"W 51°24'16.8"N 127°38'55.7"W and 51°24'17.8"N 127°38'57.2"W <i>DFO(6205220-06)</i>

**3934 - Approaches to/Approches à Smith Sound and/et Rivers Inlet - New Chart - 21-FEB-1992 - NAD 1983**

06-JUN-2025

LNMD. 01-DEC-2023

Delete	wharf (See Chart 1, F13)	joining 51°24'22.5"N 127°38'42.1"W 51°24'23.1"N 127°38'44.7"W 51°24'21.8"N 127°38'46.0"W and 51°24'21.0"N 127°38'43.3"W <i>DFO(6205220-01)</i>
Delete	pontoon (See Chart 1, F16)	between 51°24'23.0"N 127°38'44.6"W and 51°24'24.6"N 127°38'43.9"W <i>DFO(6205220-02)</i>
Delete	pontoon (See Chart 1, F16)	between 51°24'21.5"N 127°38'45.7"W and 51°24'15.8"N 127°38'51.3"W <i>DFO(6205220-03)</i>
Add	pontoon (See Chart 1, F16)	between 51°24'18.7"N 127°38'44.7"W and 51°24'19.5"N 127°38'48.0"W <i>DFO(6205220-04)</i>
Add	pontoon (See Chart 1, F16)	joining 51°24'23.1"N 127°38'44.7"W 51°24'23.4"N 127°38'46.0"W 51°24'19.5"N 127°38'48.0"W and 51°24'16.0"N 127°38'50.3"W <i>DFO(6205220-05)</i>

Add	floating breakwater Bkw (See Chart 1, F4.1)	joining 51°24'12.2"N 127°38'54.0"W 51°24'15.3"N 127°38'54.7"W 51°24'16.8"N 127°38'55.7"W and 51°24'17.8"N 127°38'57.2"W DFO(6205220-06)
-----	--	---

**3943 - Finlayson Channel and/et Tolmie Channel - New Chart - 25-APR-2008 - NAD 1983**

20-JUN-2025

LNMD. 03-JAN-2025

Delete	depth of 2.8 metres (See Chart 1, I10)	52°35'20.6"N 128°45'32.7"W  DFO(6205231-01)
Add	depth of 1.3 metres (See Chart 1, I10)	52°35'19.4"N 128°45'30.4"W  DFO(6205231-02)
Delete	depth of 4.4 metres (See Chart 1, I10)	52°36'49.8"N 128°46'15.9"W  DFO(6205231-03)
Add	depth of 2.7 metres (See Chart 1, I10)	52°36'50.5"N 128°46'15.4"W  DFO(6205231-04)
Add	depth of 2.1 metres (See Chart 1, I10)	52°36'53.8"N 128°46'11.9"W  DFO(6205231-05)
Add	depth of 2.7 metres (See Chart 1, I10)	52°37'13.7"N 128°46'39.0"W  DFO(6205231-07)
Delete	depth of 3 metres (See Chart 1, I10)	52°37'17.2"N 128°46'34.2"W  DFO(6205231-08)
Add	rock which covers and uncovers with drying height of 0.1 metres (See Chart 1, K11)	52°37'18.0"N 128°46'33.9"W  DFO(6205231-09)
Delete	depth of 7.4 metres (See Chart 1, I10)	52°37'20.8"N 128°46'25.8"W  DFO(6205231-11)
Add	depth of 0.7 metres (See Chart 1, I10)	52°37'22.9"N 128°46'26.5"W  DFO(6205231-12)
Delete	depth of 1.3 metres (See Chart 1, I10)	52°37'26.8"N 128°46'36.4"W  DFO(6205231-13)
Add	depth of 1.2 metres (See Chart 1, I10)	52°37'26.8"N 128°46'36.4"W  DFO(6205231-14)
Add	rock which covers and uncovers with drying height of 0.7 metres (See Chart 1, K11)	52°38'26.1"N 128°45'11.3"W  DFO(6205231-16)

Delete	depth of 16.8 metres (See Chart 1, I10)	52°36'54.2"N 128°46'16.5"W
		<i>DFO(6205231-17)</i>

Delete	depth of 10.3 metres (See Chart 1, I10)	52°37'13.3"N 128°46'34.3"W
		<i>DFO(6205231-18)</i>

**3958 - Prince Rupert Harbour - New Edition - 13-DEC-2013 - World Geodetic System 1984**

06-JUN-2025

LNMD. 13-DEC-2024

Affix	patch	54°16'00.0"N 130°22'00.0"W
	Download Patch - <a href="https://www.notmar.gc.ca/chsftp/patches/3958_6205213_1_202505061221.pdf">https://www.notmar.gc.ca/chsftp/patches/3958_6205213_1_202505061221.pdf</a>	
		<i>DFO(6205213-01)</i>

**3980 - Laredo Sound - New Chart - 13-JAN-2017 - World Geodetic System 1984**

20-JUN-2025

LNMD. 28-MAR-2025

Delete	depth of 8.2 metres (See Chart 1, I10)	52°33'08.2"N 128°43'46.1"W
		<i>DFO(6205221-01)</i>

Add	rock which covers and uncovers with drying height of 0.5 metres (See Chart 1, K11)	52°33'07.7"N 128°43'44.6"W
		<i>DFO(6205221-02)</i>

Delete	depth of 15 metres (See Chart 1, I10)	52°32'31.4"N 128°43'55.6"W
		<i>DFO(6205229-01)</i>

Add	depth of 3 metres (See Chart 1, I10)	52°32'31.4"N 128°43'53.7"W
		<i>DFO(6205229-02)</i>

Delete	depth of 14.2 metres (See Chart 1, I10)	52°31'53.3"N 128°43'25.1"W
		<i>DFO(6205229-03)</i>

Add	depth of 4.2 metres (See Chart 1, I10)	52°31'53.5"N 128°43'22.7"W
		<i>DFO(6205229-04)</i>

Delete	depth of 3.6 metres (See Chart 1, I10)	52°31'37.5"N 128°44'35.4"W
		<i>DFO(6205229-05)</i>

Add	depth of 1.6 metres (See Chart 1, I10)	52°31'38.3"N 128°44'35.1"W
		<i>DFO(6205229-06)</i>

Add	depth of 1.6 metres (See Chart 1, I10)	52°31'29.9"N 128°44'44.2"W
		<i>DFO(6205229-07)</i>

Add	depth of 0.5 metres (See Chart 1, I10)	52°31'30.4"N 128°44'30.9"W
		<i>DFO(6205229-08)</i>

Delete	depth of 13.2 metres (See Chart 1, I10)	52°32'21.2"N 128°43'35.6"W <i>DFO(6205229-09)</i>
Add	depth of 6.2 metres (See Chart 1, I10)	52°32'21.8"N 128°43'35.1"W <i>DFO(6205229-10)</i>
Delete	depth of 6.2 metres (See Chart 1, I10)	52°33'09.1"N 128°44'17.2"W <i>DFO(6205229-11)</i>
Add	depth of 4.3 metres (See Chart 1, I10)	52°33'08.3"N 128°44'19.2"W <i>DFO(6205229-12)</i>
Delete	depth of 2.8 metres (See Chart 1, I10)	52°35'20.6"N 128°45'32.7"W <i>DFO(6205231-01)</i>
Add	depth of 1.3 metres (See Chart 1, I10)	52°35'19.4"N 128°45'30.4"W <i>DFO(6205231-02)</i>
Delete	depth of 4.4 metres (See Chart 1, I10)	52°36'49.8"N 128°46'15.9"W <i>DFO(6205231-03)</i>
Add	depth of 2.7 metres (See Chart 1, I10)	52°36'50.5"N 128°46'15.4"W <i>DFO(6205231-04)</i>
Add	depth of 2.1 metres (See Chart 1, I10)	52°36'53.8"N 128°46'11.9"W <i>DFO(6205231-05)</i>
Delete	depth of 4.8 metres (See Chart 1, I10)	52°37'14.5"N 128°46'39.7"W <i>DFO(6205231-06)</i>
Add	depth of 2.7 metres (See Chart 1, I10)	52°37'13.7"N 128°46'39.0"W <i>DFO(6205231-07)</i>
Add	rock which covers and uncovers with drying height of 0.1 metres (See Chart 1, K11)	52°37'18.0"N 128°46'33.9"W <i>DFO(6205231-09)</i>
Delete	depth of 1.8 metres (See Chart 1, I10)	52°37'22.4"N 128°46'26.9"W <i>DFO(6205231-10)</i>
Add	depth of 0.7 metres (See Chart 1, I10)	52°37'22.9"N 128°46'26.5"W <i>DFO(6205231-12)</i>
Add	rock which covers and uncovers with drying height of 0.9 metres (See Chart 1, K11)	52°29'44.2"N 128°48'16.3"W <i>DFO(6205234-02)</i>

Delete	depth of 17.2 metres (See Chart 1, I10)	52°29'47.3"N 128°48'13.3"W <i>DFO(6205234-03)</i>
Add	depth of 2.6 metres (See Chart 1, I10)	52°29'47.2"N 128°48'14.7"W <i>DFO(6205234-04)</i>
Add	depth of 1 metre (See Chart 1, I10)	52°30'47.2"N 128°48'35.8"W <i>DFO(6205234-05)</i>
Add	depth of 2.7 metres (See Chart 1, I10)	52°31'00.8"N 128°48'48.7"W <i>DFO(6205234-06)</i>
Add	depth of 1.2 metres (See Chart 1, I10)	52°30'49.4"N 128°48'38.3"W <i>DFO(6205234-07)</i>
Delete	depth of 0.4 metres (See Chart 1, I10)	52°30'45.8"N 128°48'57.0"W <i>DFO(6205234-08)</i>
Add	depth of 0.3 metres (See Chart 1, I10)	52°30'45.7"N 128°48'57.2"W <i>DFO(6205234-09)</i>
Delete	depth of 1 metre (See Chart 1, I10)	52°32'35.1"N 128°49'38.1"W <i>DFO(6205234-10)</i>
Add	depth of 0.7 metres (See Chart 1, I10)	52°32'34.4"N 128°49'41.6"W <i>DFO(6205234-11)</i>
Add	rock which covers and uncovers with drying height of 1.5 metres (See Chart 1, K11)	52°30'38.8"N 128°48'40.9"W <i>DFO(6205234-12)</i>

**3981 - Laredo Channel and/et Laredo Inlet - New Chart - 19-APR-2013 - NAD 1983**  
20-JUN-2025

LNMD. 03-JAN-2025

Delete	depth of 4.4 metres (See Chart 1, I10)	52°36'49.8"N 128°46'15.9"W <i>DFO(6205231-03)</i>
Add	depth of 2.7 metres (See Chart 1, I10)	52°36'50.5"N 128°46'15.4"W <i>DFO(6205231-04)</i>
Add	depth of 2.1 metres (See Chart 1, I10)	52°36'53.8"N 128°46'11.9"W <i>DFO(6205231-05)</i>
Delete	depth of 4.8 metres (See Chart 1, I10)	52°37'14.5"N 128°46'39.7"W <i>DFO(6205231-06)</i>



Add	depth of 2.7 metres (See Chart 1, I10)	52°37'13.7"N 128°46'39.0"W <i>DFO(6205231-07)</i>
Add	rock which covers and uncovers with drying height of 0.1 metres (See Chart 1, K11)	52°37'18.0"N 128°46'33.9"W <i>DFO(6205231-09)</i>
Delete	depth of 1.8 metres (See Chart 1, I10)	52°37'22.4"N 128°46'26.9"W <i>DFO(6205231-10)</i>
Add	depth of 0.7 metres (See Chart 1, I10)	52°37'22.9"N 128°46'26.5"W <i>DFO(6205231-12)</i>
Delete	depth of 1.3 metres (See Chart 1, I10)	52°37'26.8"N 128°46'36.4"W <i>DFO(6205231-13)</i>
Add	depth of 1.2 metres (See Chart 1, I10)	52°37'26.8"N 128°46'36.4"W <i>DFO(6205231-14)</i>
Delete	depth of 17.2 metres (See Chart 1, I10)	52°38'24.2"N 128°45'13.9"W <i>DFO(6205231-15)</i>
Add	rock which covers and uncovers with drying height of 0.7 metres (See Chart 1, K11)	52°38'26.1"N 128°45'11.3"W <i>DFO(6205231-16)</i>

**7101 - Davis Strait and/et Baffin Bay - New Edition - 12-JAN-1979 - Unknown**  
06-JUN-2025

LNMD. 02-MAY-2025

Add	depth of 7 fathoms, Rep (2025) (See Chart 1, I10)	67°58'48.0"N 053°57'30.0"W <i>(BRITAD:1783/2025) DFO(6605513-01)</i>
-----	--	---

**7193 - Cape Hooper and Approaches/et les Approches - New Edition - 25-MAR-2016 - NAD 1983**  
27-JUN-2025

Delete	depth of 5 fathoms 5 feet (See Chart 1, I10)	68°29'59.7"N 066°32'36.4"W <i>DFO(6605501-17)</i>
Add	depth of 8 fathoms (See Chart 1, I10) This notice affects Electronic Navigational Chart: CA373545	68°29'54.2"N 066°32'36.9"W <i>DFO(6605501-18)</i>

**7194 - Cape Hooper to/à Arguyartu Point Including/y compris Ekalugad Fiord - New Edition - 25-MAR-2016 - NAD 1983**  
27-JUN-2025

Delete	beacon with radar reflector, marked Bn PA (See Chart 1, Q10, B7)	68°37'38.5"N 067°43'43.1"W <i>DFO(6605501-01)</i>
--------	---	--

Delete	beacon with radar reflector, marked Bn PA (See Chart 1, Q10, B7)	68°39'11.0"N 067°34'03.6"W <i>DFO(6605501-02)</i>
Delete	depth of 17 fathoms (See Chart 1, I10)	68°36'04.0"N 067°34'39.6"W <i>DFO(6605501-03)</i>
Add	depth of 63 fathoms (See Chart 1, I10)	68°36'04.0"N 067°34'39.6"W <i>DFO(6605501-04)</i>
Delete	depth of 3 fathoms 1 foot (See Chart 1, I10)	68°36'06.7"N 067°35'00.0"W <i>DFO(6605501-05)</i>
Add	depth of 70 fathoms (See Chart 1, I10)	68°36'06.7"N 067°35'00.0"W <i>DFO(6605501-06)</i>
Delete	depth of 2 fathoms 5 feet (See Chart 1, I10)	68°36'07.9"N 067°35'27.4"W <i>DFO(6605501-07)</i>
Add	depth of 84 fathoms (See Chart 1, I10)	68°36'07.9"N 067°35'27.4"W <i>DFO(6605501-08)</i>
Delete	depth of 5 fathoms 5 feet (See Chart 1, I10)	68°36'24.0"N 067°35'14.1"W <i>DFO(6605501-09)</i>
Add	depth of 46 fathoms (See Chart 1, I10)	68°36'24.0"N 067°35'14.1"W <i>DFO(6605501-10)</i>
Delete	depth of 1 fathom 5 feet (See Chart 1, I10)	68°36'19.7"N 067°36'30.3"W <i>DFO(6605501-11)</i>
Add	depth of 90 fathoms (See Chart 1, I10)	68°36'19.7"N 067°36'30.3"W <i>DFO(6605501-12)</i>
Delete	depth of 4 fathoms 5 feet (See Chart 1, I10)	68°36'33.0"N 067°36'46.0"W <i>DFO(6605501-13)</i>
Add	depth of 24 fathoms (See Chart 1, I10)	68°36'33.0"N 067°36'46.0"W <i>DFO(6605501-14)</i>
Delete	depth of 5 fathoms marked, PA (See Chart 1, I10)	68°37'12.0"N 067°29'36.0"W <i>DFO(6605501-15)</i>
Add	depth of 70 fathoms (See Chart 1, I10)	68°37'12.0"N 067°29'36.0"W <i>DFO(6605501-16)</i>

Delete	depth of 5 fathoms 5 feet (See Chart 1, I10)	68°27'57.3"N 066°33'33.7"W  <i>DFO(6605501-17)</i>
Add	depth of 8 fathoms (See Chart 1, I10) This notice affects Electronic Navigational Chart: CA373545	68°27'55.4"N 066°33'33.9"W  <i>DFO(6605501-18)</i>

## Section 3: Radio Aids to Marine Navigation Corrections

**\*612/25 Radio Aids to Marine Navigation 2025 (Atlantic, St. Lawrence, Great Lakes, Lake Winnipeg, Arctic and Pacific)**

**Page 2-60**

**AMEND AS FOLLOWS:**

### 2.2 Canal and Lock Operations

**Table 2-27 - Atlantic Coast, Gulf and St. Lawrence River to Montréal, Eastern Arctic**

Name Coordinates Call Sign	Class of Service	Channel	Remarks
Canso Lock, N.S. <del>45°38'04"N</del> <del>061°24'30"W</del> 45°38'55"N 061°24'52"W  VAZ3	SC	16 11	Operated by Fisheries and Oceans Canada. Canal traffic only. Continuous during navigation season.

## Section 4: Canadian Sailing Directions Corrections

---

The following **Canadian Sailing Directions** volumes have recently been updated on the [Canadian Hydrographic Service website](#).

No.	Title
<b>Atlantic Coast</b>	
<b>ATL 105</b>	Cape Canso to Cape Sable (including Sable Island)
<b>ATL 110</b>	St. Lawrence River, Cap Whittle / Cap Gaspé to Les Escoumins and Anticosti Island
<b>ATL 112</b>	St. Lawrence River, Cap-Rouge to Montréal and Rivière Richelieu
<b>Central Canada</b>	
<b>CEN 303</b>	Welland Canal and Lake Erie
<b>CEN 305</b>	Lake Huron, St. Marys River, Lake Superior
<b>Pacific Coast</b>	
<b>PAC 203</b>	Cape Caution to Stewart and Haida Gwaii

Each volume includes a section entitled “Record of Changes” which lists all updates that are incorporated during the current calendar year.

## Section 5: List of Lights, Buoys and Fog Signals Corrections

The amendments are **highlighted** and deletions are **crossed out**. For general and region-specific information on the List of Lights, click on the following links: [Newfoundland and Labrador Coast](#), [Atlantic Coast](#), [Inland Waters](#) and [Pacific Coast](#).

No.	Name	Position ----- Latitude N. Longitude W.	Light Characteristics	Focal Height in m. above water	Nomi- nal Range	Description ----- Height in meters above ground	Remarks ----- Fog Signals
-----	------	--	--------------------------	--	-----------------------	--	---------------------------------

### PACIFIC COAST

#### VANCOUVER HARBOUR (LL 385.3 – 416.5)

385.5	Vancouver Approach Cautionary light buoy QA	W. of Point Grey, traffic separation zone. 49 16 <b>31.6</b> 123 19 <b>13.8</b>	Fl Y 4s	.....	.....	Yellow, marked "QA".	Year round.
	<b>Racon - - (G)</b> <b>X Band</b>						Chart:3496 <b>Edn 06/25 (P25-020)</b>
388	Burrard Inlet Cautionary light buoy QB	E. end of traffic lane separator. 49 19 <b>17.4</b> 123 12 <b>06.8</b>	Fl Y 4s	.....	.....	Yellow, marked "QB".	Year round.
	<b>Racon - - (K)</b> <b>X &amp; S Bands</b>						Chart:3496 <b>Edn 06/25 (P25-021)</b>

#### NORTHERN INSIDE CHANNELS (LL 587 – 718.5)

617 G5713	Ivory Island	On Robb Point, Milbanke Sound. 52 16 10.1 128 24 <b>24.2</b>	Fl W 5s	<b>20.5</b>	<b>16</b>	<b>Red</b> Skeleton tower. <b>26.0</b>	Flash 1 s; eclipse 4 s. <b>Operates 24 h.</b> Year round.
							Chart:3910 <b>Edn 06/25 (P25-019)</b>